



the
SOUD

at CYPRESS WATERS

EVENT SPACES

the SOUND

at CYPRESS WATERS

Located beside North Lake, The Sound offers nature and lively events. Immerse yourself in outdoor fun and unique gatherings. Explore trails where dogs and runners mingle, creating a vibrant atmosphere. The Sound is your playground for unforgettable adventures, planned or spontaneous.

Our indoor and outdoor event spaces cater to private parties, corporate events, and weddings. Whether you prefer casual elegance or rustic charm, we tailor each event to perfection. Your vision, timeless or nature-inspired, is brought to life seamlessly with style and grace.

VISIT US AT THE SOUND TX.COM



CHOOSE FROM:

- 1 Event Lawn for open-air or tented events
- 2 The Trails provides 1m, 5K and 10K race capabilities
- 3 The Rogers-O'Brien Amphitheater to use with the stage or on its own The Town Hall for an indoor space with a view
- 4 Town Hall for your indoor event needs
- 5 The Sound Logo



1. EVENT LAWN

With plenty of space for your guests and options for an open-air or tented event, there are endless opportunities to make this expansive lawn uniquely yours.



2. THE TRAILS

Pedestrian trails can be marked off for 1m, 5K and 10K distances. Additional paved and unpaved trails are under development so you can blaze your own trail.



3. ROGERS-O'BRIEN AMPHITHEATER

This semi-circle lawn faces The Sound Stage and can be reserved with the stage or on its own. A well-manicured lawn and slight slope make this a great space for a casual gathering.



4. TOWN HALL

At The Town Hall, your event is in session and all the details are yours to create. With a blank slate, the only limitation is your creativity. Town Hall can be used with Eno's Rooftop Deck.



5. The Sound Logo

Discover endless options at this versatile venue, ideal for company picnics, receptions, markets, concerts, and more. With a mix of gravel and paved stones, it offers a spacious canvas for your imagination to thrive.



The Town Hall transcends the ordinary with its captivating features. With its floor-to-ceiling windows framing stunning vistas of North Lake, this venue stands out as a truly unique space. Whether you're hosting a corporate meeting that sparks creativity among colleagues or seeking to infuse your wedding reception or social gathering with an enchanting ambiance, the Town Hall delivers. Its industrial-chic decor and spacious open floorplan provide the canvas for limitless customization, allowing you to craft the perfect setting for any occasion and unleash your creativity in event design.

EQUIPMENT AVAILABLE

A/V with projection screen, 2 TVs, 2 microphones, music aux connector, HDMI and wireless HDMI. Kitchenette with refrigerator/freezer, sinks and commercial ice machine. Male and Female 2-stall restrooms in room.

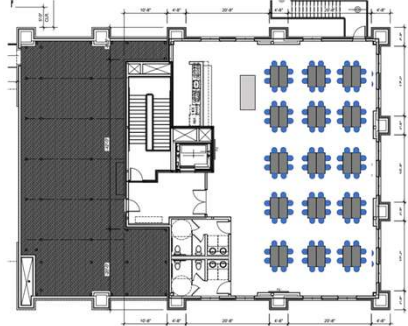
RENTAL CHARGE

Personalize quotes based on needs for event.
Option to add or remove furniture (additional fee).

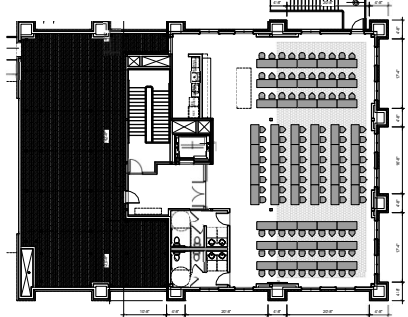
DIMENSIONS	SQ FT	CAPACITY OCCUPANCY
112 x 145'	3,343	Seated - 20-166 (max) Standing - 250



BANQUET SETTING



CLASSROOM SETTING





Eno's

ROOFTOP DECK

the **SOUD**
at CYPRESS WATERS

Combine the allure of The Town Hall with Eno's Rooftop Deck to create an unparalleled indoor-outdoor venue experience. Ideal for receptions, private gatherings, corporate soirées, or product launch parties, this fusion offers the best of both worlds. Covered trellises provide shelter while allowing guests to bask in the natural beauty, with sweeping 180-degree views of the lake adding to the enchantment. Whether under the open sky or within the chic industrial ambiance, this idyllic setting promises to elevate any event to extraordinary heights.

EQUIPMENT AVAILABLE

Can be used in conjunction with The Town Hall. Standard audio connections with sound board capabilities.

RENTAL CHARGE

Personalized quotes given based on needs

DIMENSIONS	SQ FT	CAPACITY OCCUPANCY
N/A	1,789	20-100





Overlooking The Sound Stage, this charming semi-circle lawn offers versatility for your event needs. Whether booked alongside the stage for an immersive experience or as a standalone venue, its meticulously manicured lawn and gentle slope provide the perfect backdrop for gatherings of all kinds. From relaxed social occasions to lively race-day kickoffs, this space accommodates various activities with ease, promising an enjoyable atmosphere for all attendees.

EQUIPMENT AVAILABLE

Can be used in conjunction with The Sound Stage. Professional AV Company available for hire – OnStage Systems. Stage – 32ft x 12ft

RENTAL CHARGE

Personalized quotes based on needs for your event.

DIMENSIONS	SQ FT	CAPACITY OCCUPANCY
112' x 145'	16,240	1,255





THE SOUND LOGO

the
SOUB
at CYPRESS WATERS

Embrace boundless possibilities at this adaptable venue, perfect for hosting company picnics, receptions, markets, concerts and beyond. Featuring a blend of gravel and paved stones, this expansive space provides a blank canvas for your creativity to soar.

EQUIPMENT AVAILABLE

Can be used in conjunction with The Sound Stage. Standard electrical connections.

RENTAL CHARGE

Personalized quotes based on needs for your event.

DIMENSIONS	SQ FT	CAPACITY OCCUPANCY
30' x 60'		300





EVENT LAWN

the
SOUD
at CYPRESS WATERS

Whether you prefer a casual and classic ambiance or embrace a natural and rustic charm, our Event Lawn caters to your unique style, ensuring your outdoor event feels nothing short of grand. Set against a backdrop of twinkling café lights, this expansive lawn offers ample space for your guests to gather and celebrate. Whether you envision an open-air affair under the stars or prefer the comfort of a tented event, the possibilities are endless. From romantic weddings to corporate gatherings, this versatile space provides the ideal setting for memorable occasions that leave a lasting impression.

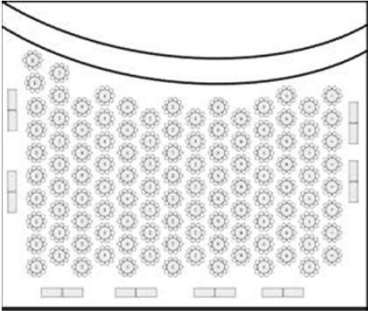
EQUIPMENT AVAILABLE

Power, restrooms & café lights.

RENTAL CHARGE

Personalized quote based on needs

DIMENSIONS	SQ FT	CAPACITY OCCUPANCY
100' x 65'	16,240	150 - 2,000



BANQUET SETTING



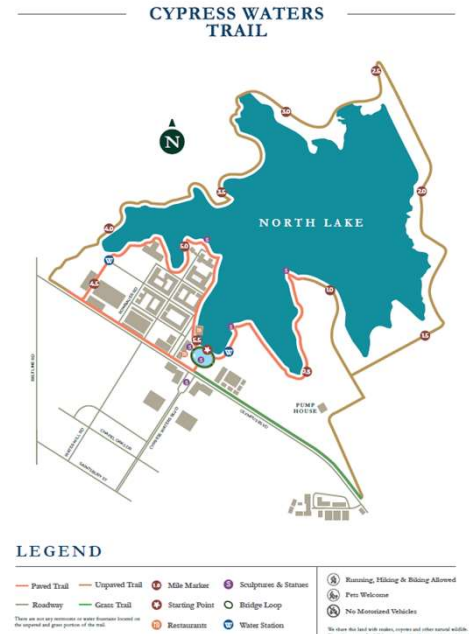
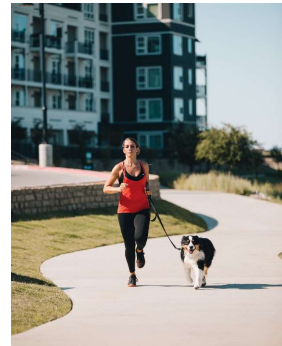
Embark on your journey through Cypress Waters' paved trails, meticulously designed for 1-mile, 5K, and 10K distances, all conveniently located within the development. As we continue to expand, additional paved and unpaved trails are being developed, inviting you to forge your own path and explore the beauty of our surroundings. These trails aren't just for running—they're versatile spaces perfect for Fun Runs, Sponsored Charity races, Color Runs, and beyond. Lace up your shoes and join us as we pave the way for memorable outdoor adventures and community connections.

EQUIPMENT AVAILABLE

6+ miles - 12' paved near the lake, plus up to 2-5 miles additional sidewalk trails.

RENTAL CHARGE

Personalized quote based on your needs.





For more information [Click Here](#)

TheSoundtx.com

the
SOUND
at CYPRESS WATERS